



# INDOFINE Chemical Company, Inc.

121 Stryker Lane, Bldg. 30, Suite 1 • Hillsborough, NJ 08844 • U.S.A.

Phone: (908) 359-6778 • FAX: (908) 359-1179

website: [www.indofinechemical.com](http://www.indofinechemical.com)

e-mail: [chemical@indofinechemical.com](mailto:chemical@indofinechemical.com)

## CERTIFICATE OF ANALYSIS

Catalog Number: 020619

Product Name: **GELSEMINE**

CAS Number: [509-15-9]

Lot Number: 2205676

Chemical Formula:  $C_{20}H_{22}N_2O_2$

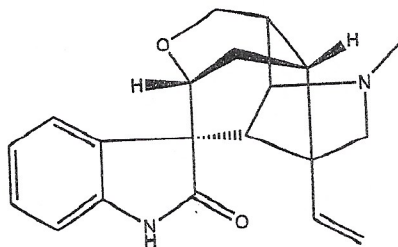
Molecular Weight: 322.41

Appearance: Off-white powder

Water Content: 0.4%

Storage: Store in a cool, dry place. Protect from light.

Purity(HPLC): 99.9%



Prepared by:  
*Ramesh Mandadi*  
Ramesh Mandadi  
Director of Operations

Reviewed and Approved by:  
*Sujata Moton*  
Sujata Moton  
VP



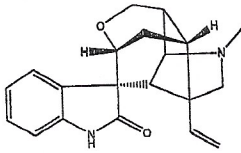
# INDOFINE Chemical Company, Inc.

121 Stryker Lane, Bldg. 30, Suite 1 • Hillsborough, NJ 08844 • U.S.A.

Phone: (908) 359-6778 • FAX: (908) 359-1179

website: [www.indofinechemical.com](http://www.indofinechemical.com)

e-mail: [chemical@indofinechemical.com](mailto:chemical@indofinechemical.com)



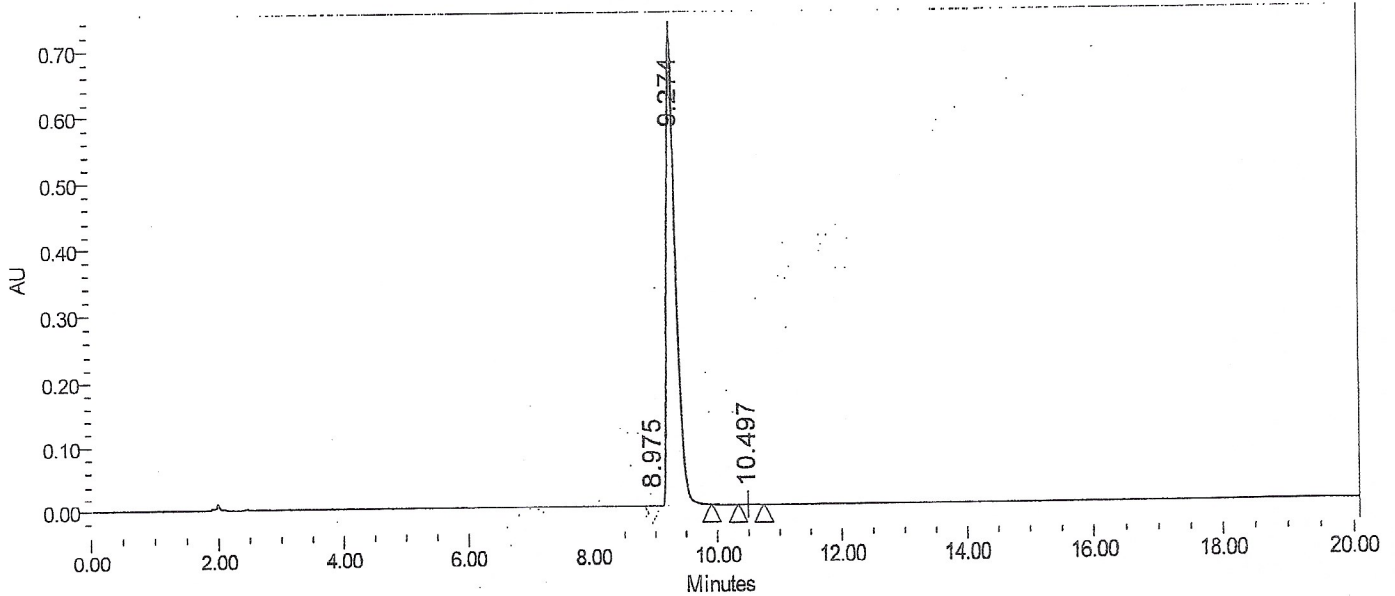
## HPLC ANALYSIS

Catalog No.: 020619  
Product Name: Gelsemine  
Lot No.: 2205676

### SAMPLE INFORMATION

Sample Name:	Gelsemine	Acquired By:	
Sample Type:	Unknown	Sample Set Name:	
Vial:	112	Acq. Method Set:	Gelsemine
Injection #:	1	Processing Method:	sample
Injection Volume:	10.00 ul	Channel Name:	PDA Ch1 252nm@4.8nm
Run Time:	25.0 Minutes	Proc. Chnl. Descr.:	PDA Ch1 252nm@4.8nm

Auto-Scaled Chromatogram



Peak Results

	Name	RT	Area	% Area	Height (μV)	USP Plate Count	USP Resolution
1		8.975	2736	0.04	387	32546.82	
2		9.274	7273813	99.87	715753	16989.93	1.24
3		10.497	6609	0.09	729	30732.40	4.55

Prepared by:  
*Ramesh Mandadi*  
Ramesh Mandadi  
Director of Operations

Reviewed and Approved by:  
*Sujata Moton*  
Sujata Moton  
VP